

Version- C**PART – B
ZOOLOGY****HSE-I****(Maximum : 20 Scores)****Time : 1 Hour****I. Answer any 3 questions from 1 to 5. Each carries 1 score. (3×1=3)**

1. The sequential event in the heart which is cyclically repeated is called
2. Name the two Gonadotrophins in Human being
3. Chemicals present in the synaptic vesicles of neurons are called.....
4. Which Plasma protein helps in Blood coagulation.....
a)Albumin b)Leucocytes c)Fibrinogen d)Globulin
5. Note the relationship in the first pair and then complete the second pair.
Man : Ureotelic
Birds :.....

II. Answer any 7 questions from 6 to 14. Each carries 2 scores. (7×2=14)

6. a) What would a person's heartbeat be if his ECG showed a 12 QRS complex in 10 seconds?
b) If his stroke volume is 70 ml, determine his cardiac output.
7. Match the following

| Column I | Column II |
|-----------------|----------------------|
| a)T4 | i)Hypothalamus |
| b)PTH | ii)Thyroid |
| c)GnRH | iii)Pituitary |
| d)LH | iv)Parathyroid gland |

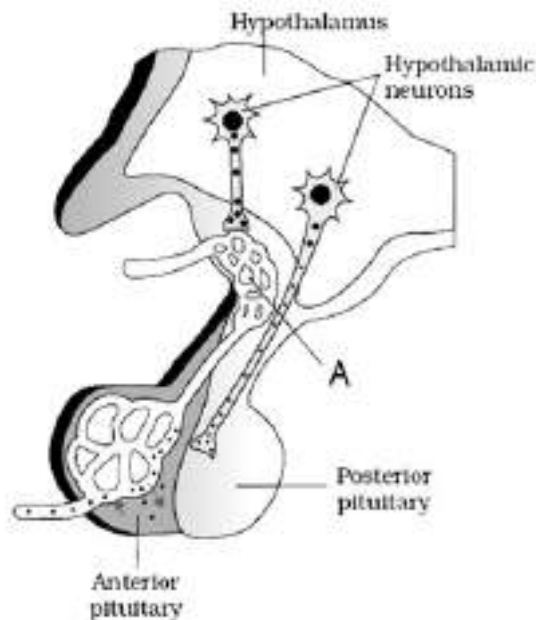
8. Name the joint present between
a)Carpals
b)Atlas and Axis
9. The pituitary gland is anatomically divided into two parts: the adenohypophysis and the neurohypophysis.
a) What are the two portions of the adenohypophysis?
b) Name the bony cavity in which pituitary gland is enclosed
c)Name the only one hormone secreted by the Pars intermedia of pituitary gland

- 10.a) What are the three types of nitrogenous waste materials found in animals?
 b) Why are terrestrial animals mostly ureotelic or uricotelic rather than ammonotelic?

11. What do you mean by

- a) Hypertension
- b) Coronary Artery Disease
- c) Angina pectoris
- d) Heart attack

12. Diagrammatic representation of pituitary and its relationship with hypothalamus



- a) Name the neurosecretory cells present in the Hypothalamus, which secrete hormones.
- b) Label the part A
- c) Name the two hormones that are actually synthesized by the hypothalamus and transported axonally to the posterior pituitary, where these hormones are stored and released.

13. Answer the following

- a) What do you mean by the term Osmoregulation
- b) Functional unit of kidneys are.....

c) A minute vessel of Peritubular capillary runs parallel to the Henle's loop of nephron forming a 'U' shaped structure called.....

d) The amount of the filtrate formed by the kidneys per minute is called.....

14.a) Name the two types of muscle fibres in Human

b) What do you mean by muscle fatigue? Which muscle fibre fatigues fastly.

III. Answer any 1 question from 15 to 17. Each carries 3 scores. (1×3=3)

15. On an educational trip, Niya and her friends observe that many local people were having swollen necks. Studies show that it is due to iodine deficiency.

a) Find out which will be the probable disease these people are suffering from?

b) What are the functions of these glands in human

16. Describe briefly about the role of liver, lungs and skin in excretion. ?

17. Classify the following parts of human brain

Corpora quadrigemina, Pons, Hypothalamus, Medulla oblongata, Cerebrum

| Fore brain | Mid brain | Hind brain |
|------------|-----------|------------|
| | | |

.....